



Coding Services Made Simpler

What you'll receive with DeliverHealth:

Get expert coding support on your terms – exactly how you want it, and when you want it.

Quality Outcomes Through Automation.

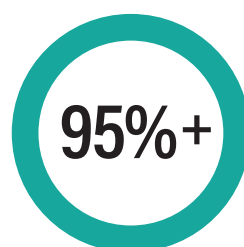


DeliverHealth is committed to high quality outcomes with our PerformPlatform coding automation.

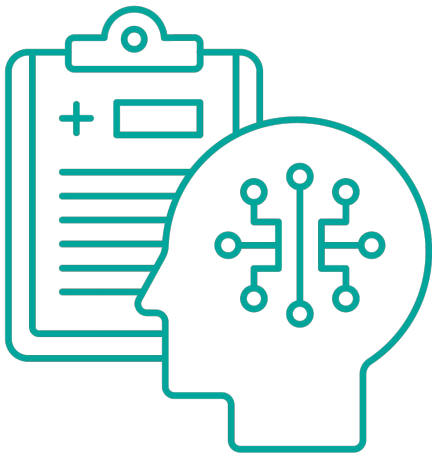
- Equipped with rules-based prebill or postbill flagging, by customized criteria (provider, location, payer, service line, codes)
- Rules engine/AI identifies records with higher likelihood of denials for focused audits
- Rules engine generates randomized audits
- Highly skilled auditors to ensure accuracy standards
- Full transparency and collaboration with your team

Expertise in:

- Acute Care Hospital – Inpatient, Observation, Emergency Department, Same-Day Surgery, Outpatient Ancillary (Oncology, Rehab, Lab, Radiology & More)
- Ambulatory Surgery Centers
- Urgent Care Centers
- Freestanding ED Centers
- Behavioral Health – Inpatient & Outpatient
- Physician Office & Clinic
- E&M and profee Coding in 27 Specialties

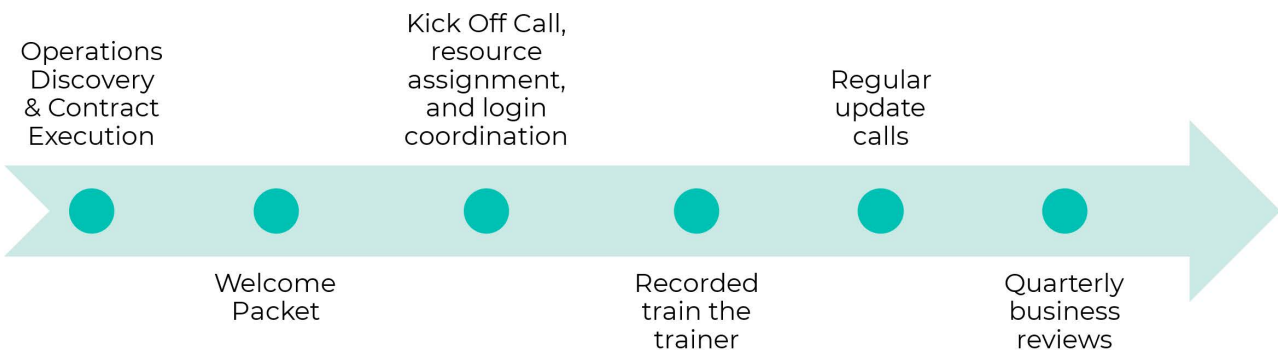


DeliverHealth
average coding
quality score



- Deep subject matter expertise in facility & profee coding
- A highly qualified team of AHIMA and AAPC certified coders
- Domestic coding, global coding, or a hybrid approach –you choose!
- A domestic coding manager to give you exceptional support
- We'll code in your platform or in our secure Perform Platform – your choice
- No FTE minimums... NO long term commitments

Immediate Next Steps...



Learn more about how we can help you simplify medical coding today.

e. info@deliverhealth.com p. 877.874.6475 [deliverhealth.com](https://www.deliverhealth.com)



Copyright © 2023 DeliverHealth Solutions, Inc. All rights reserved. DeliverHealth Solutions and its logo are trademarks and/or registered trademarks of DeliverHealth Solutions, or its affiliates in the United States and/or other countries. All other brand and product names are trademarks or registered trademarks of their respective companies.